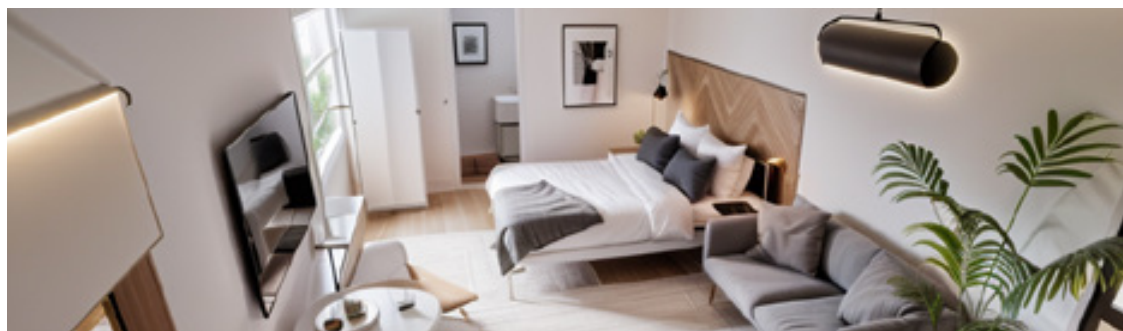


PREMIUM PORTABLES

Your guide to tiny living

premiumportables.co.nz



The Luna

Priced from: **\$119,990** + delivery



8.5 x 3.6m² | 30.6m²



1 Bedroom



Bathroom



Kitchen



Wheels Available

The Luna, your 1 Bedroom open plan design featuring a 1200×900 shower, a Laundry sink/washing machine in the Bathroom. The full size Kitchen is a real bonus and provides a very functional space for a single occupant or a couple looking to downsize.

Compliance Code Of Compliance. Electrical, Gas & Plumbing Certificates

Electrical 32 Amp Power Socket, 7x Double Powerpoints, Smoke Detectors, 5x Led Lights Interior & 2 Exterior

Windows 4x Double Glazed Windows

Plumbing Gravity-Fed System

Water Heating Gas Califont

Roof, Barge, Gutters & Downpipes Colour Steel Ebony Flashing
Roof 150mm Pir Corrugates
Ebony 90mm Marley Stratus

Walls Exterior 100mm Eps Structural Insulated Ribbed Panels (Sips)

Kitchen Customisable Colours, Oven, Range Hood, 2 Burner Hob, Light Pendant

Bathroom 1200 X 900mm Shower, Vanity, Toilet Towel Rail, Robe Hooks, Extractor Fan & Toilet Roll Holder

Wardrobe Large In-Built Cube Studio Set A

Flooring Customisable Vinyl & Carpet

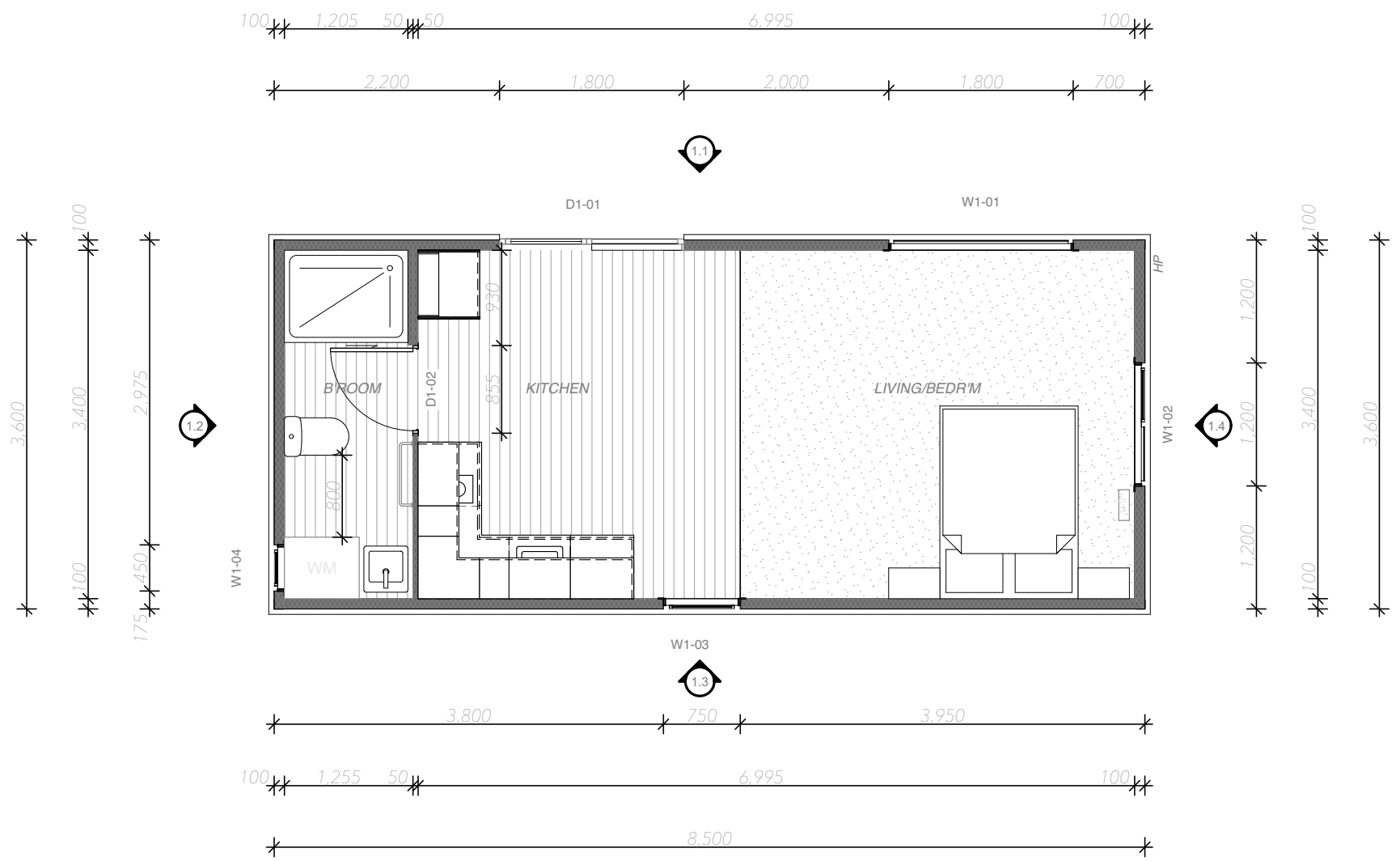
Heating 4kw Heat Pump

Internal Walls 50mm Eps Structural Insulated Ribbed Panels (Sips)

Entry Door 1 Ranch Slider Thermal Double Glazed

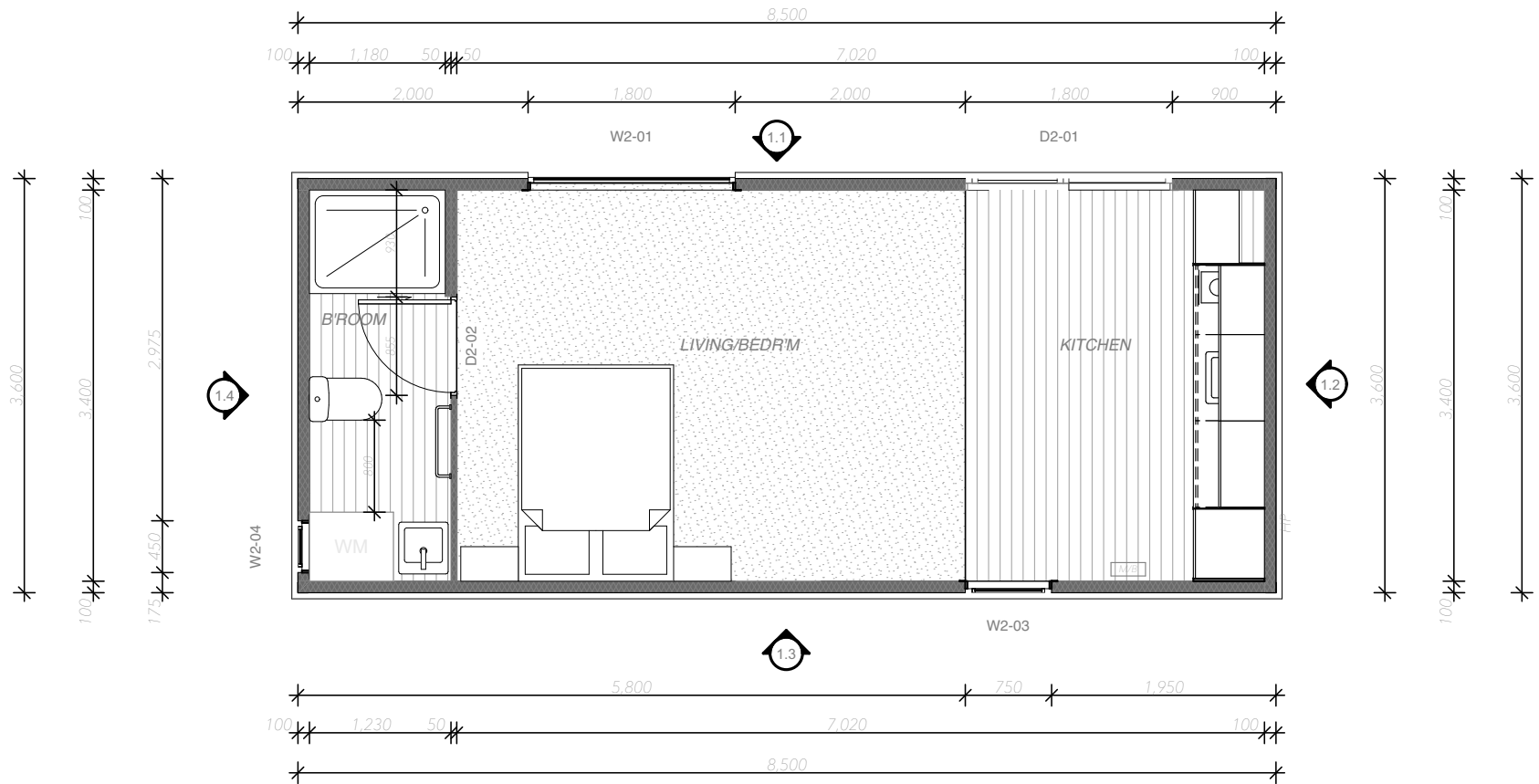
Version one . Luna . Tiny Home . Floorplan .

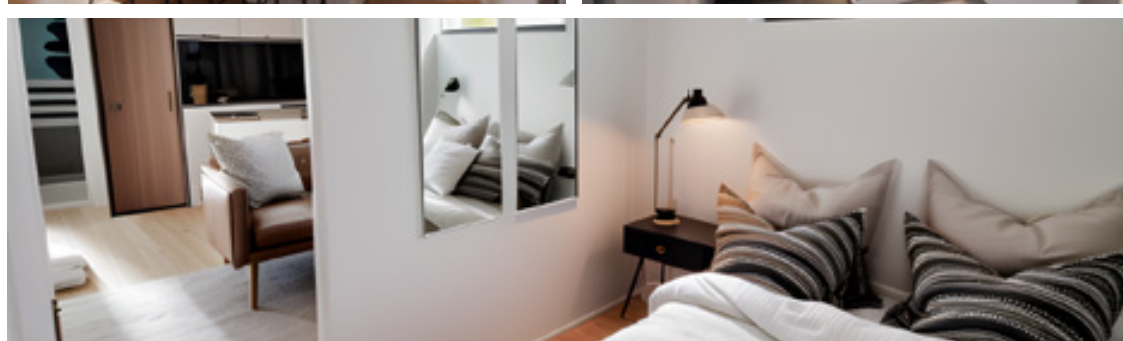
V1



Version two . Luna . Tiny Home . Floorplan .

V2





The Hugo

Priced from: **\$134,990** + delivery

 10 x 3.6m² | 36m²

 1 Bedroom

 Bathroom

 Kitchen

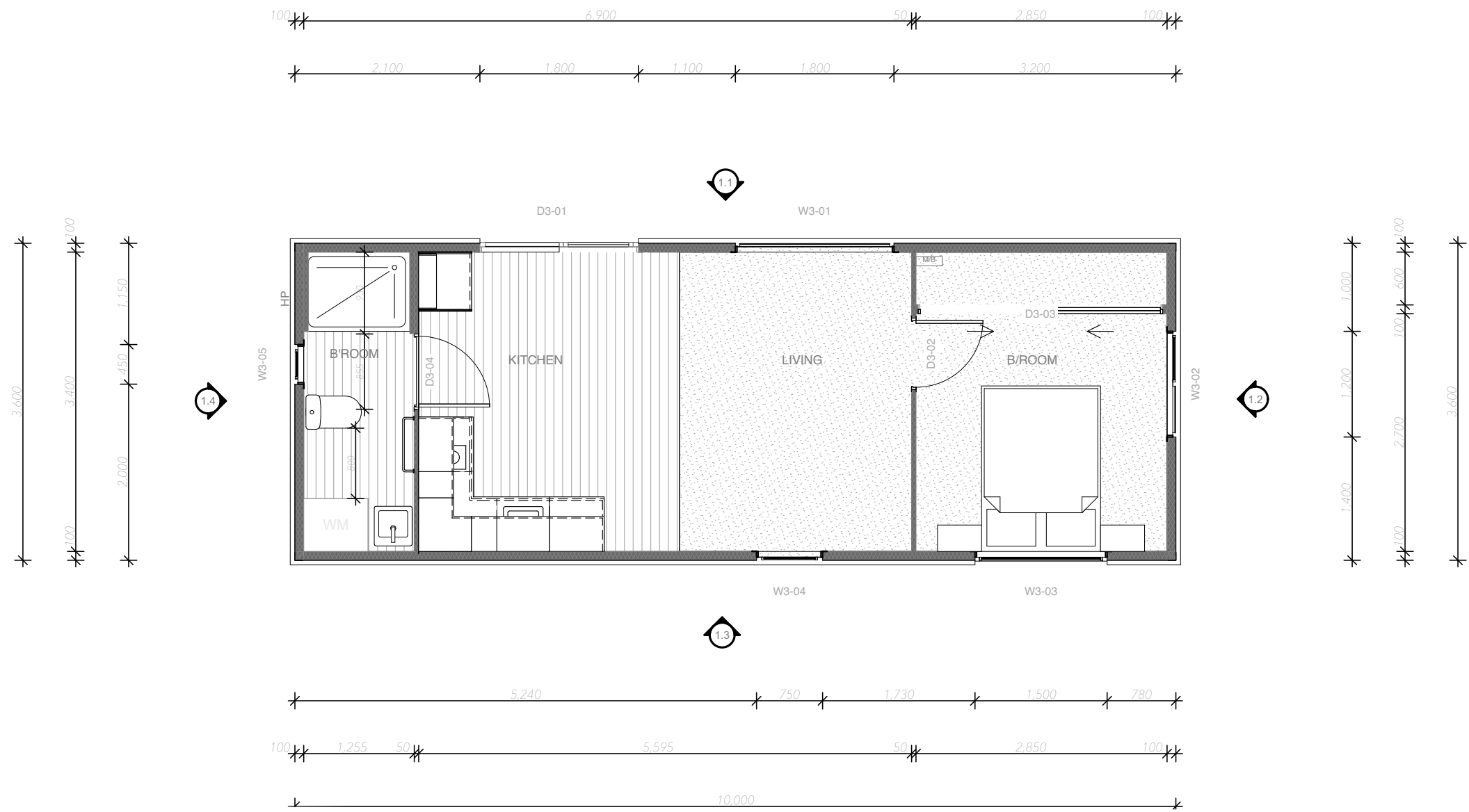
 Wheels Available

The Hugo, your 1 Bedroom option with a large Bathroom/Laundry area giving this building a real “At Home” feel, with its separate Master Bedroom layout making it the ideal plan for a couple.

Compliance	Code Of Compliance. Electrical, Gas & Plumbing Certificates	Kitchen	Customisable Colours, Oven, Range Hood, 2 Burner Hob, Light Pendant
Electrical	32 Amp Power Socket, 10x Double Powerpoints, Smoke Detectors, 7x Led Lights Interior & 2 Exterior	Bathroom	1200mm X 900mm Or 900mm X 900mm Shower, Vanity, Toilet Towel Rail, Robe Hooks, Extractor Fan & Toilet Roll Holder
Windows	4x Double Glazed Windows	Wardrobe	Large In-Built Cube Studio Set A
Plumbing	Gravity-Fed System	Flooring	Customisable Vinyl & Carpet
Water Heating	Gas Califont	Heating	4kw Heat Pump
Roof, Barge, Gutters & Downpipes	Colour Steel Ebony Flashing Roof 150mm Pir Corrugates Ebony 90mm Marley Stratus	Internal Walls	50mm Eps Structural Insulated Ribbed Panels (Sips)
Walls Exterior	100mm Eps Structural Insulated Ribbed Panels (Sips)	Entry Door	1 Ranch Slider Thermal Double Glazed

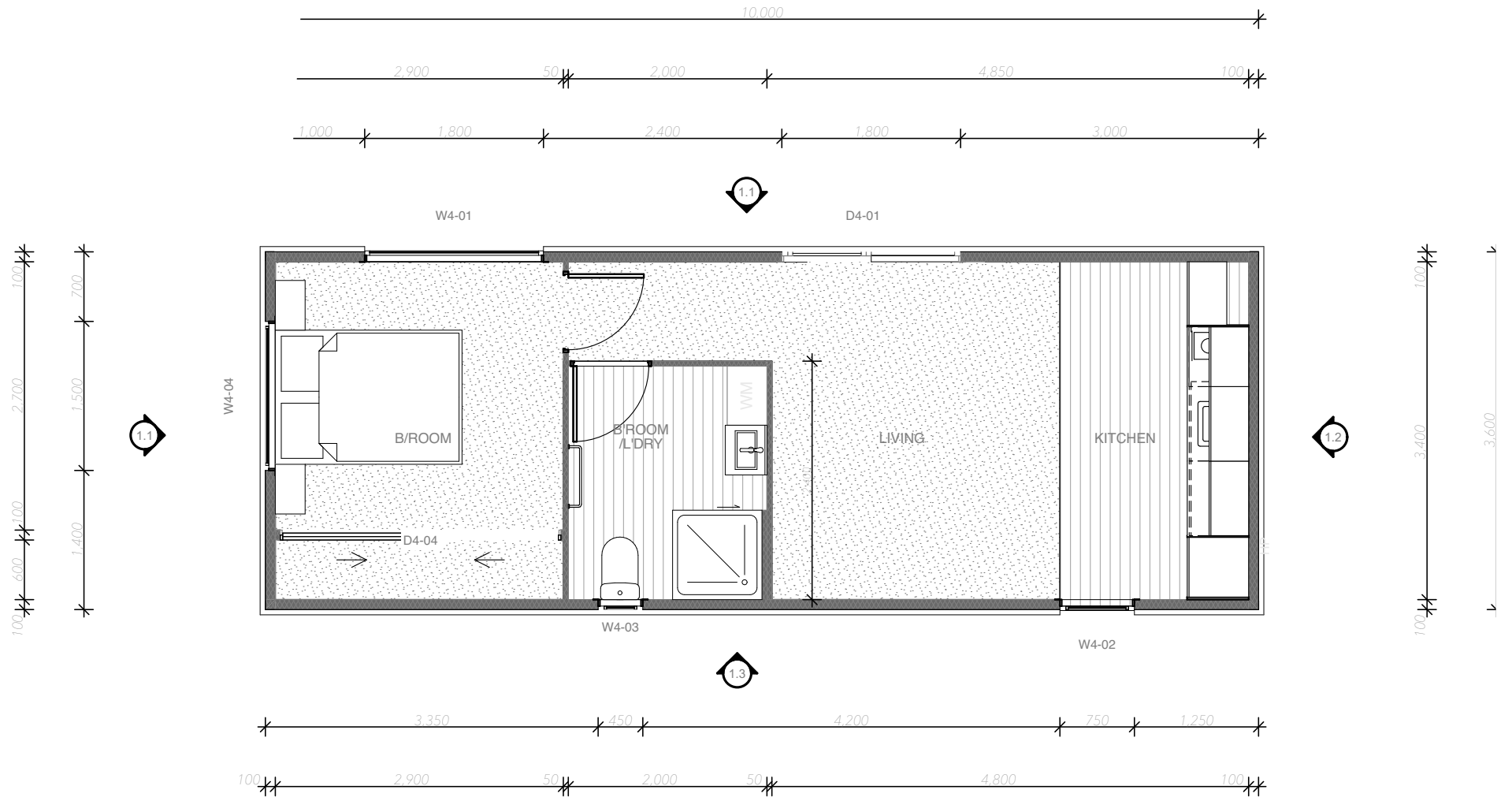
Version one . Hugo . Tiny Home . Floorplan .

V1



Version two . Hugo . Tiny Home . Floorplan .

V2





The Santana

Priced from: **\$154,990** + delivery



12.5 x 3.6m² | 45m²



1-2 Bedroom



Bathroom



Kitchen



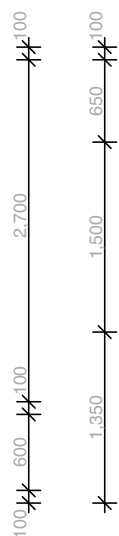
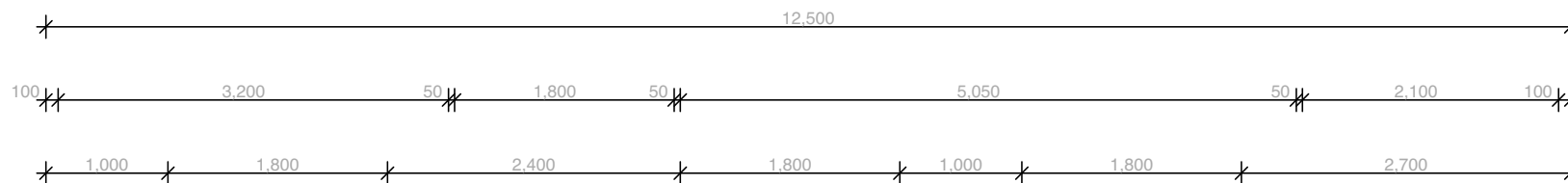
Wheels Available

The Santana, your 2 Bedroom option features a large MasterBedroom with ample shelving in its sliding wardrobe. A Bathroom/Laundry featuring a 900×900 shower and room for a full sized washing machine. The living area is designed for entertaining, with its full size Kitchen area for a couch/tv and Dining table. The large window is a must see and gives the feeling of real space and luxury. A second single Bedroom is perfect for a child or a sleepover.

Compliance	Code of Compliance. Electrical, Gas & Plumbing Certificates	Kitchen	Customisable Colours, Oven, Range Hood, 2 Burner Hob, Pendant Light
Electrical	32 Amp Power Socket, 10x Double Power points, Smoke Detectors, 10x Led Lights Interior & 4 Exterior	Bathroom	900 x 900mm Shower, Vanity, Toilet Towel Rail, Robe Hooks, Extractor Fan & Toilet Roll Holder
Windows	5x Double Glazed Windows	Wardrobe	Large in-built Cube Studio Set A & 600mm Wardrobe.
Plumbing	Gravity-fed System	Flooring	Customisable Vinyl & Carpet
Water Heating	Gas Califont	Heating	4kw Heat Pump
Roof, barge, Gutters & Downpipes	Colour Steel Ebony Flashing Roof 150mm PIR Corrugates Ebony 90mm Marley Stratus	Internal walls	50mm EPS Structural Insulated Ribbed Panels (SIPS)
Walls Exterior	100mm EPS Structural Insulated Ribbed Panels (SIPS)	Entry Door	2 Ranch Slider Thermal Double Glazed

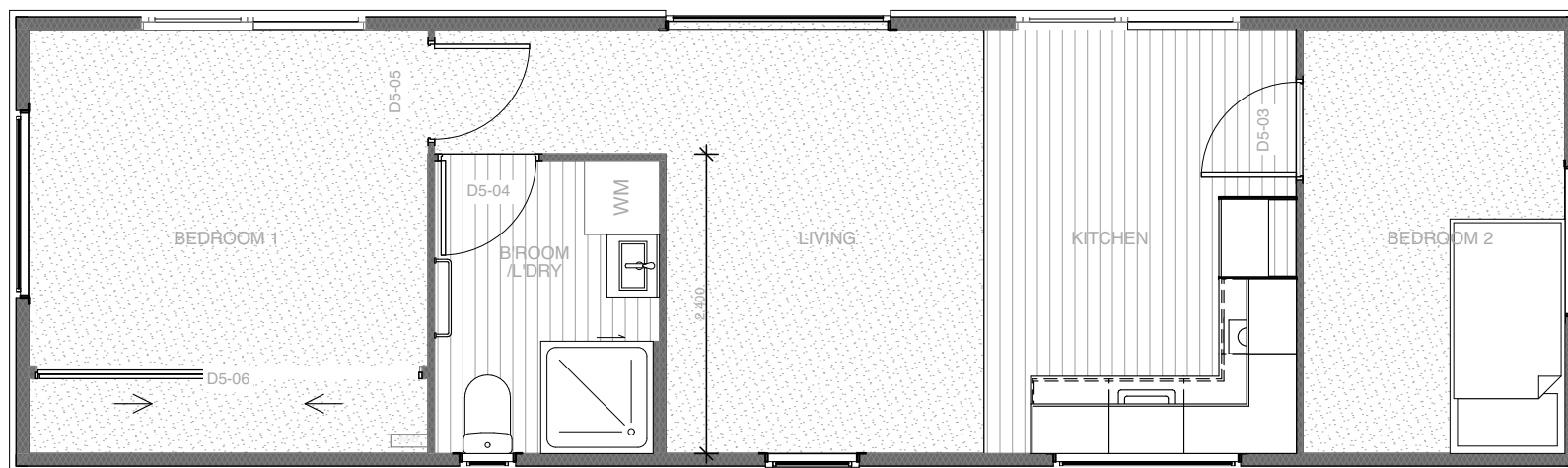
Version one . Santana . Tiny Home . Floorplan .

V1



1.4

W5-06



W5-05

1.3

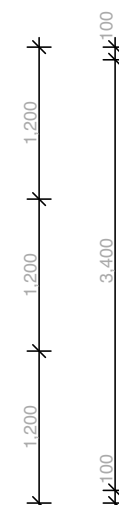
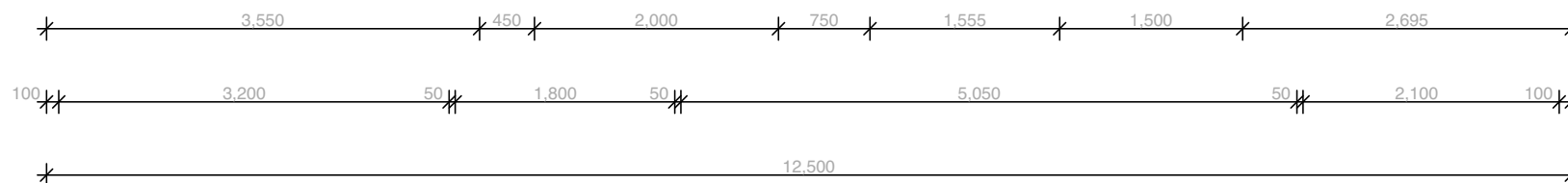
W5-04

W5-03

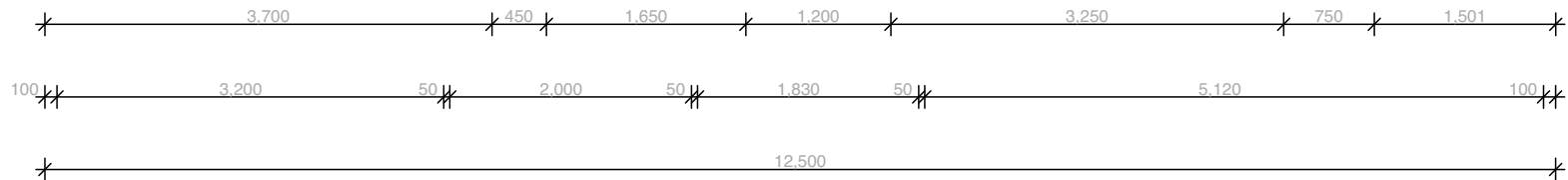
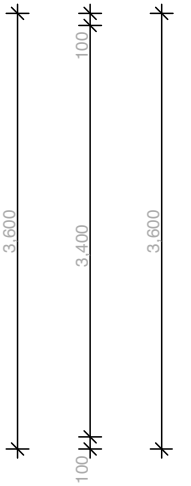
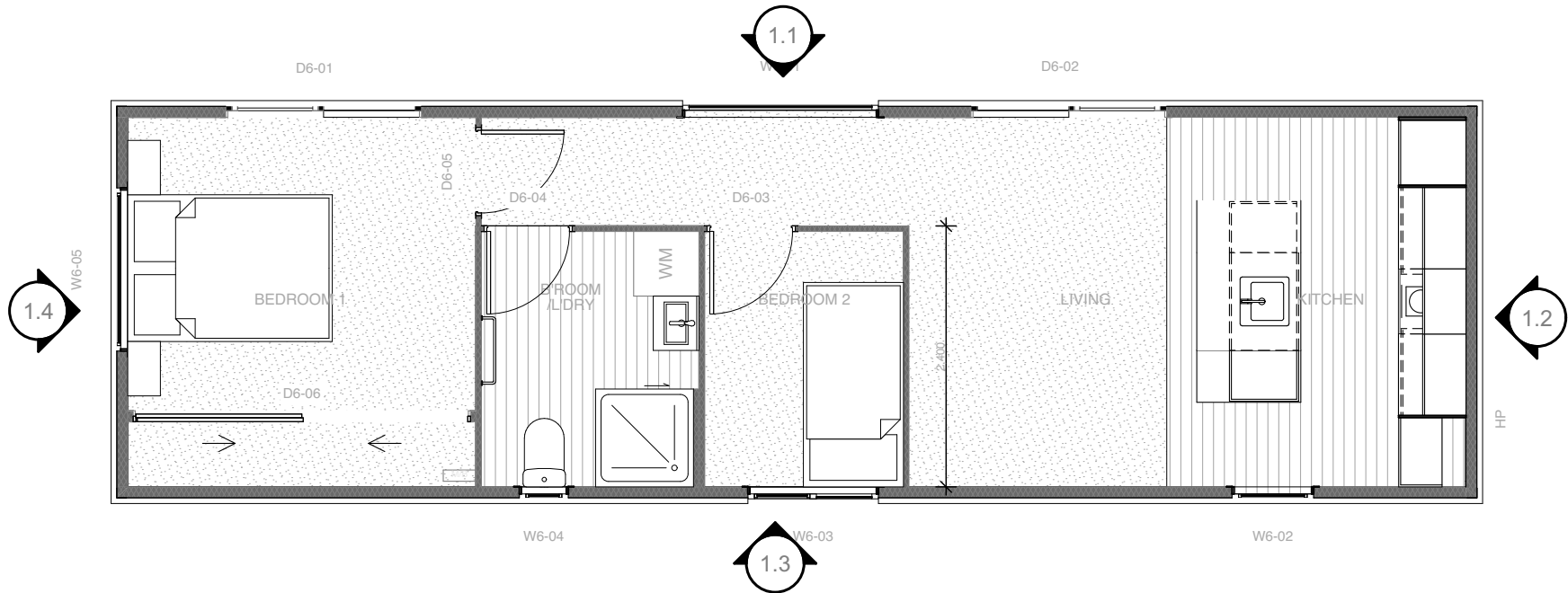
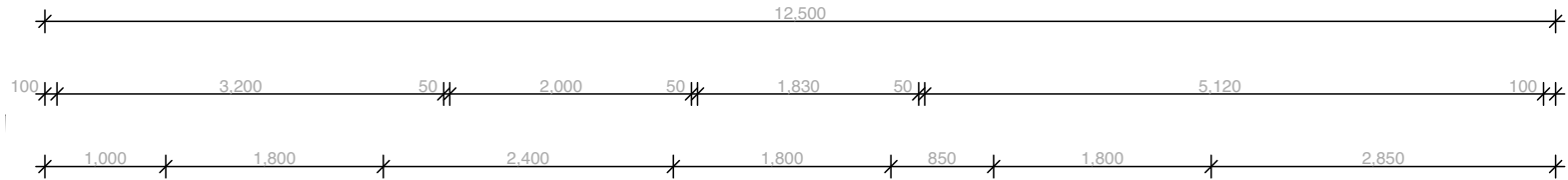
W5-02

1.2

HP



Version two . Santana . Tiny Home .
V2
Floorplan





The Belmont

Priced from: **\$184,990** + delivery



14 x 4.2m² | 58m²



2-3 Bedroom



Bathroom



Kitchen



Wheels Available

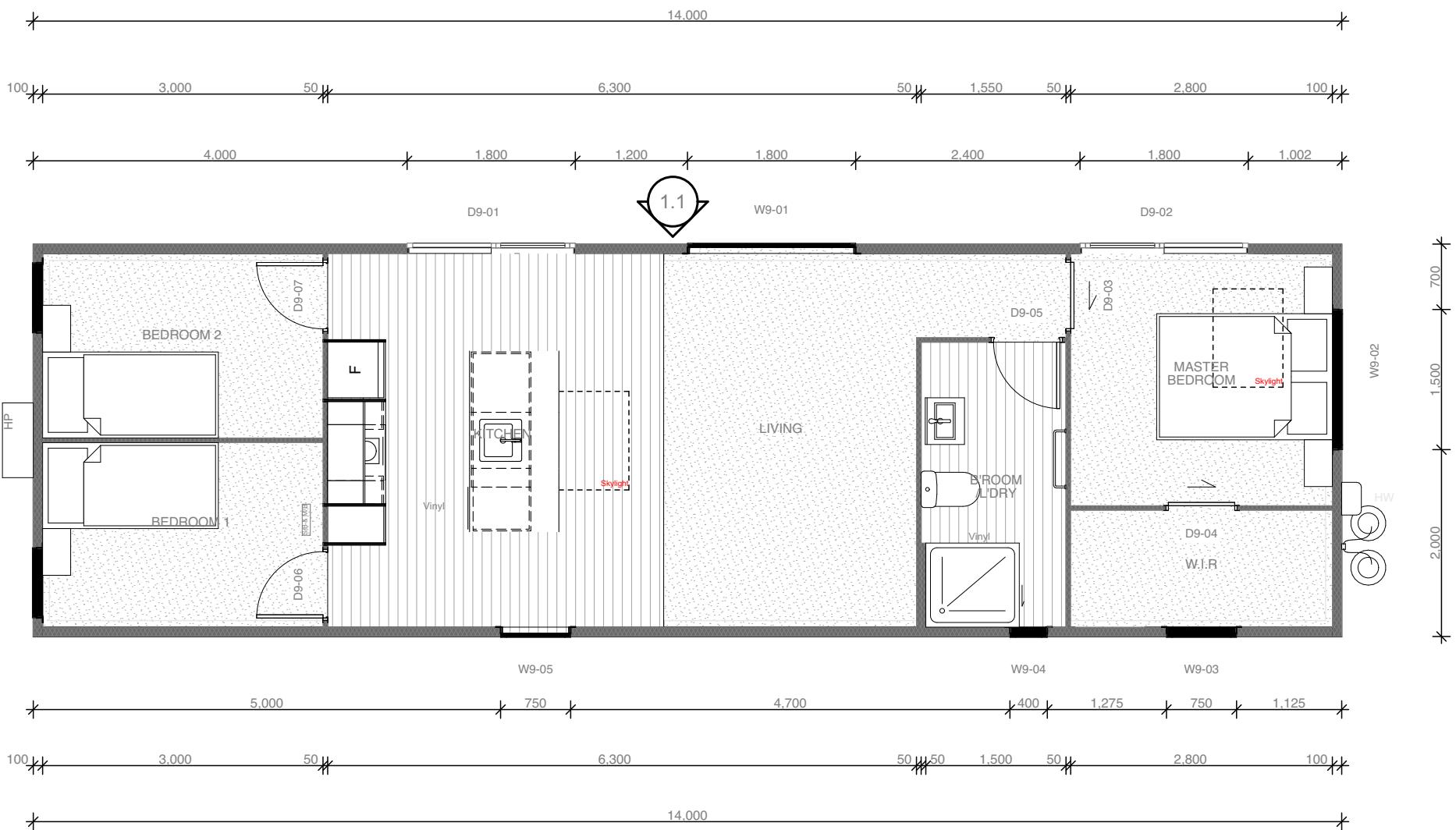
The Belmont, your versatile 2 or 3-Bedroom tiny home designed for modern living. The V1 floor plan features a spacious Master Bedroom with a walk-in robe, complemented by two twin Bedrooms ideal for kids, guests or Office space. The V2 offers a touch of luxury with his-and-her wardrobes in the extra large Master Bedroom. Both layouts include an optional skylight in the kitchen or bathroom, flooding the space with natural light. The bathroom features a generous 900×900 shower, ensuring comfort in a compact space.

The Belmont's living area is built for entertaining, boasting a full-sized kitchen, ample room for a couch and TV, and a dining table. The large window adds to the sense of space and luxury, making The Belmont a must-see for anyone looking for a stylish and functional tiny home which is not so tiny.

Compliance	Code of Compliance. Electrical, Gas & Plumbinng Certificates	Kitchen	Customisable Colours, Oven, Range Hood, 2 Burner Hob, Light Pendant & Island Bench
Electrical	32 Amp Power Socket, 14x Double Powerpoints, Smoke Detectors, 12x Led Lights Interior & 4 Exterior	Bathroom	900 x 900mm Shower, Vanity, Toliet Towel Rail, Robe Hooks, Extractor Fan & Toliet Roll Holder
Windows	8x Windows Double Glazing	Wardrobe	Large in-built Cube Studio Set A & 600mm Wardrobe.
Plumbing	Gravity-fed System	Flooring	Customisable Vinyl & Carpet
Water Heating	Gas Califont	Heating	4kw Heatpump
Roof, barge, Gutters & Downpipes	Colour Steel Ebony Flashing Roof 150mm PIR Corrugates Ebony 90mm Marley Stratus	Internal walls	50mm EPS Structural Insulated Ribbed Panels (SIPS)
Walls Exterior	100mm EPS Structural Insulated Ribbed Panels (SIPS)	Entry Door	2 Ranch Slider Thermal Double Glazed

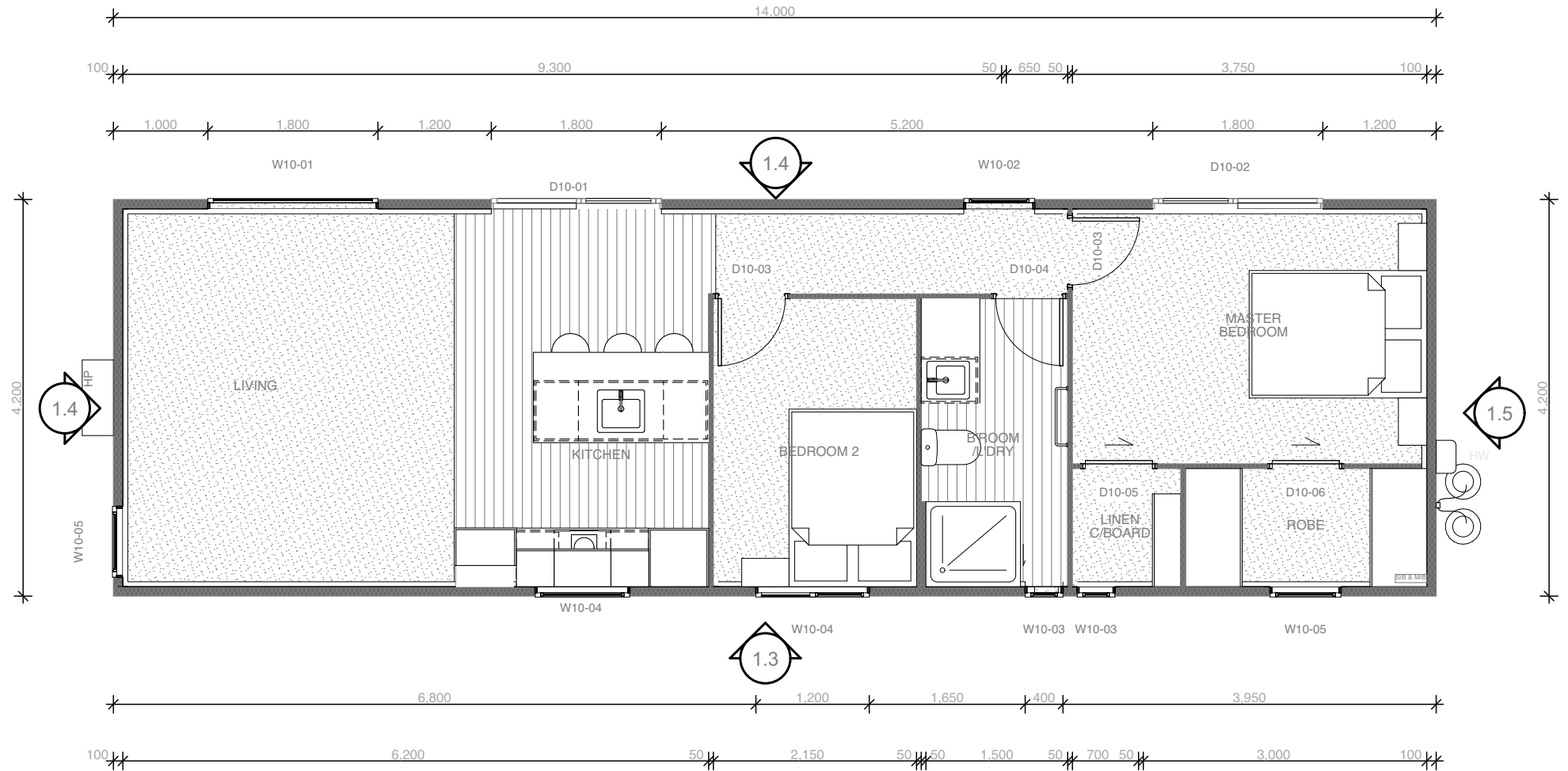
Version one . Belmont . Tiny Home . Floorplan

V1



Version two . Belmont . Tiny Home . Floorplan

V2





The Elmwood

Priced from: **\$229,990** + delivery



12.5 x 3.6m² + 6 x 3.6m² | 66.6m²



2-3 Bedroom



Bathroom



Kitchen

The Elmwood, your versatile 2 or 3-Bedroom tiny home designed for modern living. The V1 floor plan features a spacious Master Bedroom with a walk-in robe, complemented by two twin Bedrooms ideal for kids, guests or Office space. The V2 offers a touch of luxury with his-and-her wardrobes in the extra large Master Bedroom.

Both layouts include an optional skylight in the Kitchen or Bathroom, flooding the space with natural light. The Bathroom features a generous 900x900 shower, ensuring comfort in a compact space.

The Belmont's living area is built for entertaining, boasting a full-sized Kitchen, ample room for a couch and TV, and a dining table. The large window adds to the sense of space and luxury, making The Belmont a must-see for anyone looking for a stylish and functional tiny home which is not so tiny.

Compliance Code of Compliance. Electrical, Gas & Plumbing Certificates

Electrical 32 Amp Power Socket, 15x Double Power points, Smoke Detectors, 12x Led Lights Interior & 5 Exterior

Windows 6x Double Glazed Windows

Plumbing Gravity-fed System

Water Heating Gas Califont

Roof, barge, Gutters & Downpipes Colour Steel Ebony Flashing
Roof 150mm PIR Corrugates
Ebony 90mm Marley Stratus

Walls Exterior 100mm EPS Structural Insulated Ribbed Panels (SIPS)

Kitchen Customisable Colours, Oven, Range Hood, 2 Burner Hob, Pendant Light & Island Bench

Bathroom 900 x 900mm Shower, Vanity, Toilet Towel Rail, Robe Hooks, Extractor Fan & Toilet Roll Holder

Wardrobe Large in-built Cube Studio Set A & 600mm Wardrobe.

Flooring Customisable Vinyl & Carpet

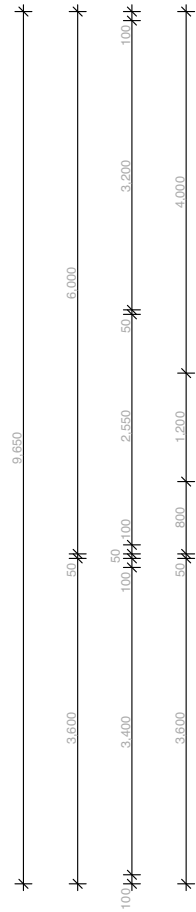
Heating 4kw Heat Pump

Internal walls 50mm EPS Structural Insulated Ribbed Panels (SIPS)

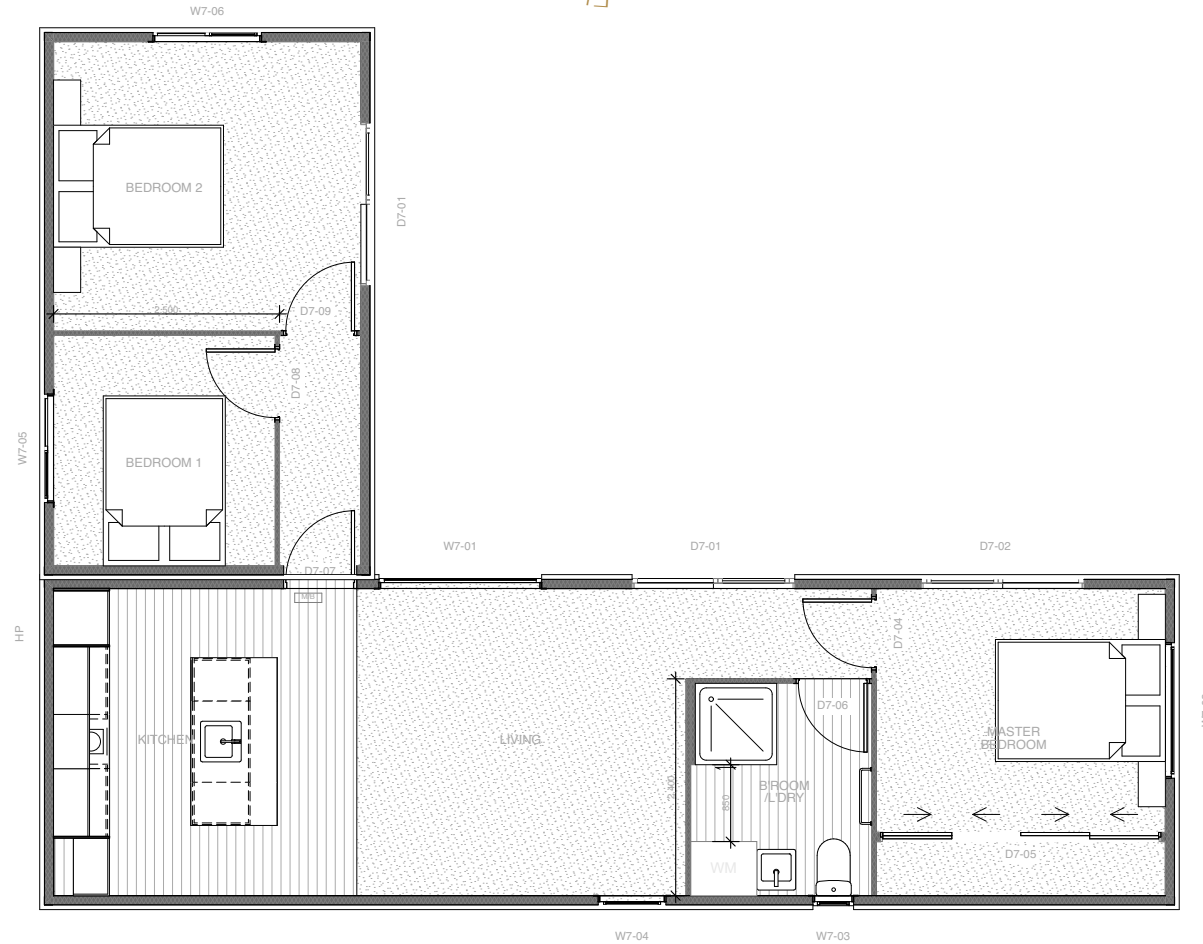
Entry Door 3 Ranch Slider Thermal Double Glazed

Version one · Elmwood · Tiny Home · Floorplan ·

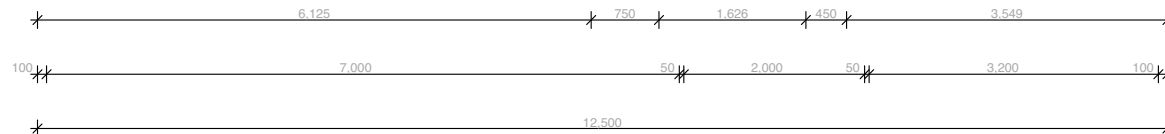
V1



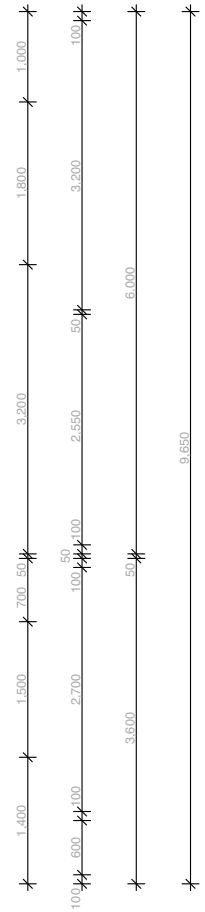
1.4

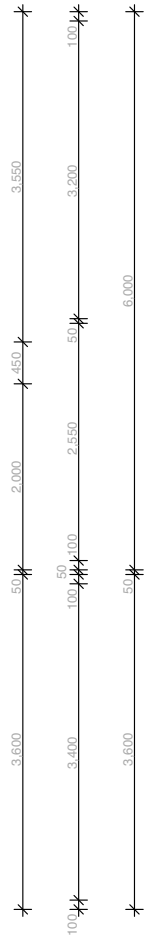


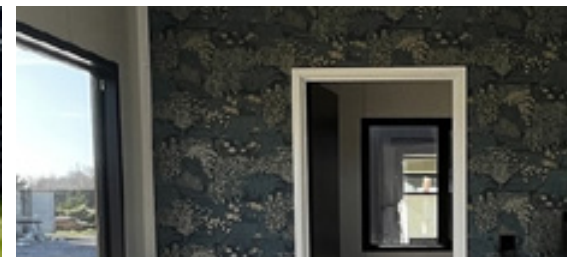
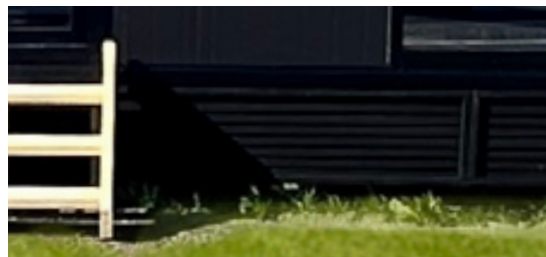
1.3



1.2







Additional Extras

- | | | | |
|--------------------------------|------------------------------|----------------------|----------------------|
| • Composite Timber Cladding | • Kitchen Upgrades | • Bathroom Upgrades | Cabinet |
| • Trellis | • Engineered Stone Bench Top | • Heated Towel Rails | • Wardrobe Upgrade |
| • Skylights | • Gas Hob | • Shower Dome | • Hot Water Cylinder |
| • Wheels/ Drawbar /Stabilisers | • Gas Oven | • LED Mirror | • Pendant Lights |
| • Interior Wallpaper | • Appliances | • Tv Bracket | • Solar |
| • Internal Timber Panelling | • Ventilation System | • USB Ports | |
| • Blinds &/Or Curtains | | • Mirrored Storage | |

Appliances & Fixtures



Cook Top
Haier ceramic 2



Cook Top
Haier ceramic 4



Cook Top
Haier gas 2 burner



Cook Top
Haier gas 4 burner



Dishwasher
Haier 45cm Compact



Dishwasher
Haier SS 13 Place



Dishwasher
F/Standing Black



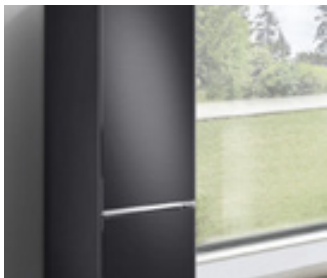
Oven
Haier 70L black



Oven
Haier 70L 7 Function



Range Hood
F&P 60cm integ



Fridge
Samsung 310L B/Mount



Washing Machine
Haier Front loader 7.5kg



Toilet



Mixer Tap



Shower Head



Shower Mixer



Shower



Toilet Roll Holder



Towel Rail



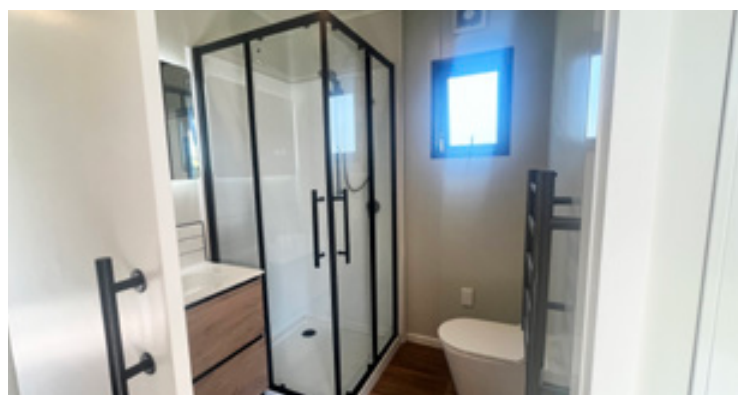
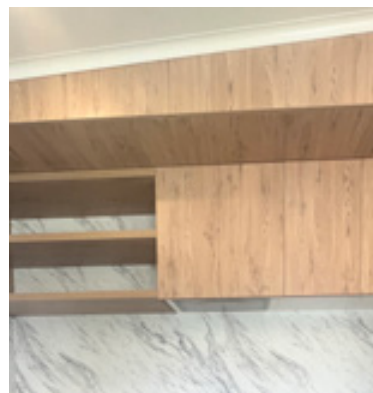
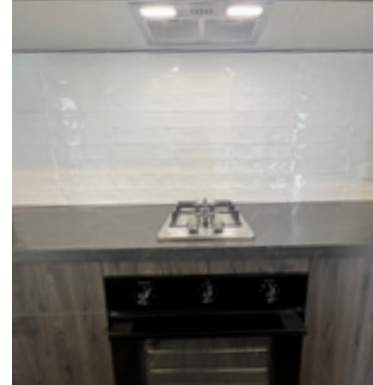
LED Mirror



Hand Towel Hook



Tapware







Why Choose Premium Portables?

At Premium Portables, we go beyond expectations to deliver tiny homes that stand out from the rest. Here's what makes us different:

Built Above NZ Building Standards: Our homes aren't just compliant—they exceed New Zealand's building regulations, ensuring superior strength, safety, and durability.

Code of Compliance Included: We guarantee peace of mind by providing full compliance with all building codes, so your home meets the highest legal standards.

Highest Quality Materials: From the foundation to the finishing touches, we use only top-tier materials, ensuring that every aspect of your tiny home is built to last.

Stunning Finishes: We pride ourselves on attention to detail, crafting beautiful finishes that bring elegance and style to your home, inside and out.

Interior Designer Support: Our expert interior designer is on hand to help you create a space that's not only functional but reflects your personal taste and lifestyle.

Customisable to You: No two homes are the same—our homes are fully customisable, allowing you to shape details to meet your unique needs.

Experience the best in tiny home living with Premium Portables, where quality, craftsmanship, and customisation come together to create the perfect space for you.

Meet Our Team

of experts responsible for bringing your

TINY HOME TO *life!*

P 0800 630 032

E sales@premiumportablesnz.com



Matt Higgs
Director



Taylor-Jane Higgs
Interior Designer



Caitlynde Knox
Administration



Jessica Gold
Sales & Marketing



Alan Banfield
Project Manager



Andrew Grant
Builder



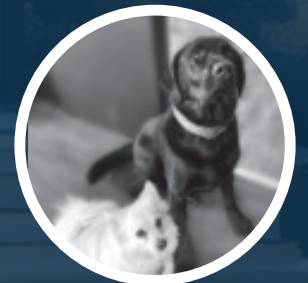
Grant Porter
Builder



Kayne Tukapua
Builder



Peter Clarke
Builder



Hux & Leo
Worksite good boys



PREMIUM PORTABLES

0800 630 032

sales@premiumportablesnz.com

89 Whites Road, Ohoka, Canterbury

premiumportables.co.nz