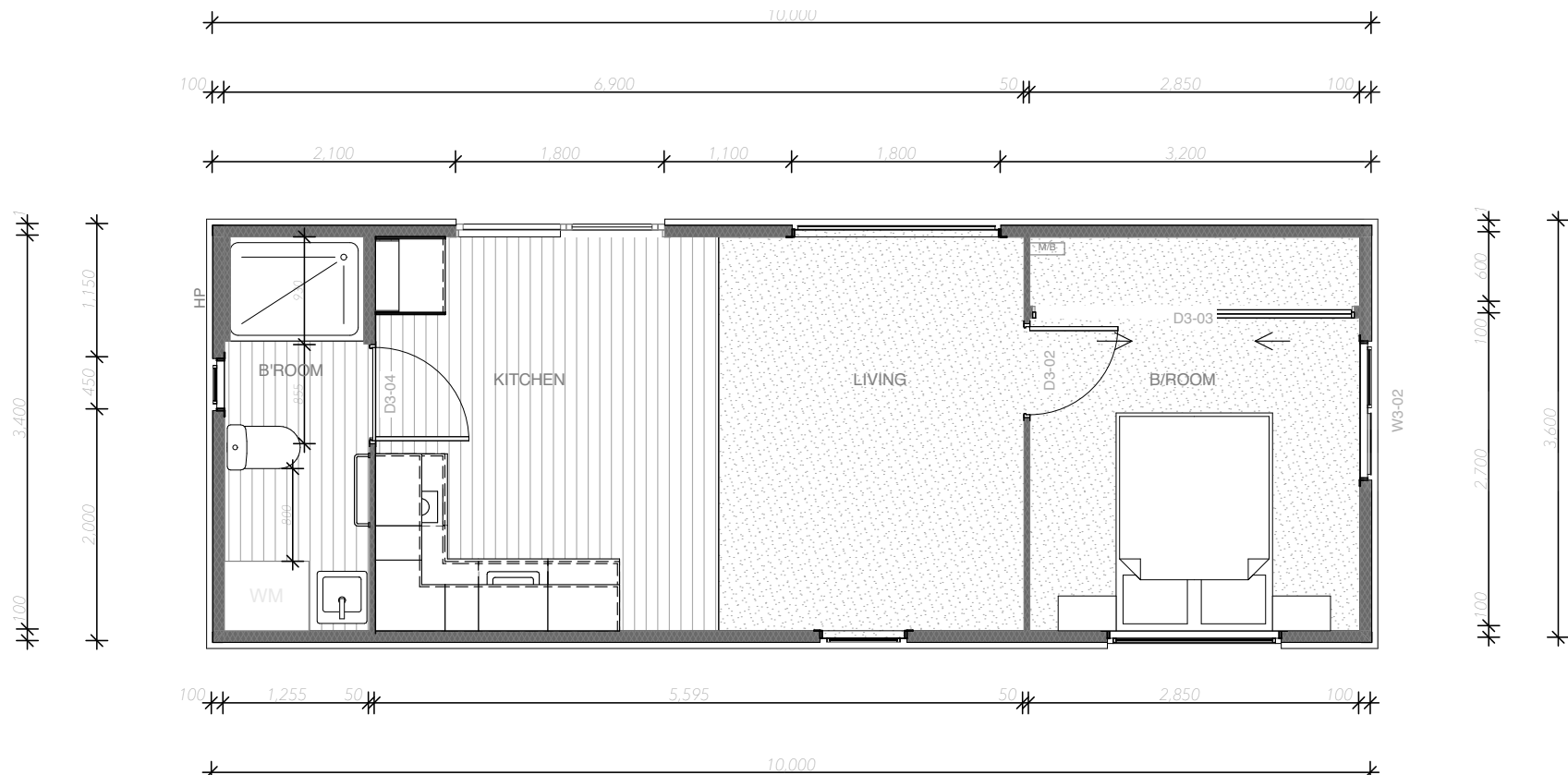


PRICED FROM
\$139,990
 + delivery



HUGO V1



10x 3.6m² | 36m²



1 Bedroom



Bathroom



Kitchen



Wheels Available



PREMIUM PORTABLE HOMES

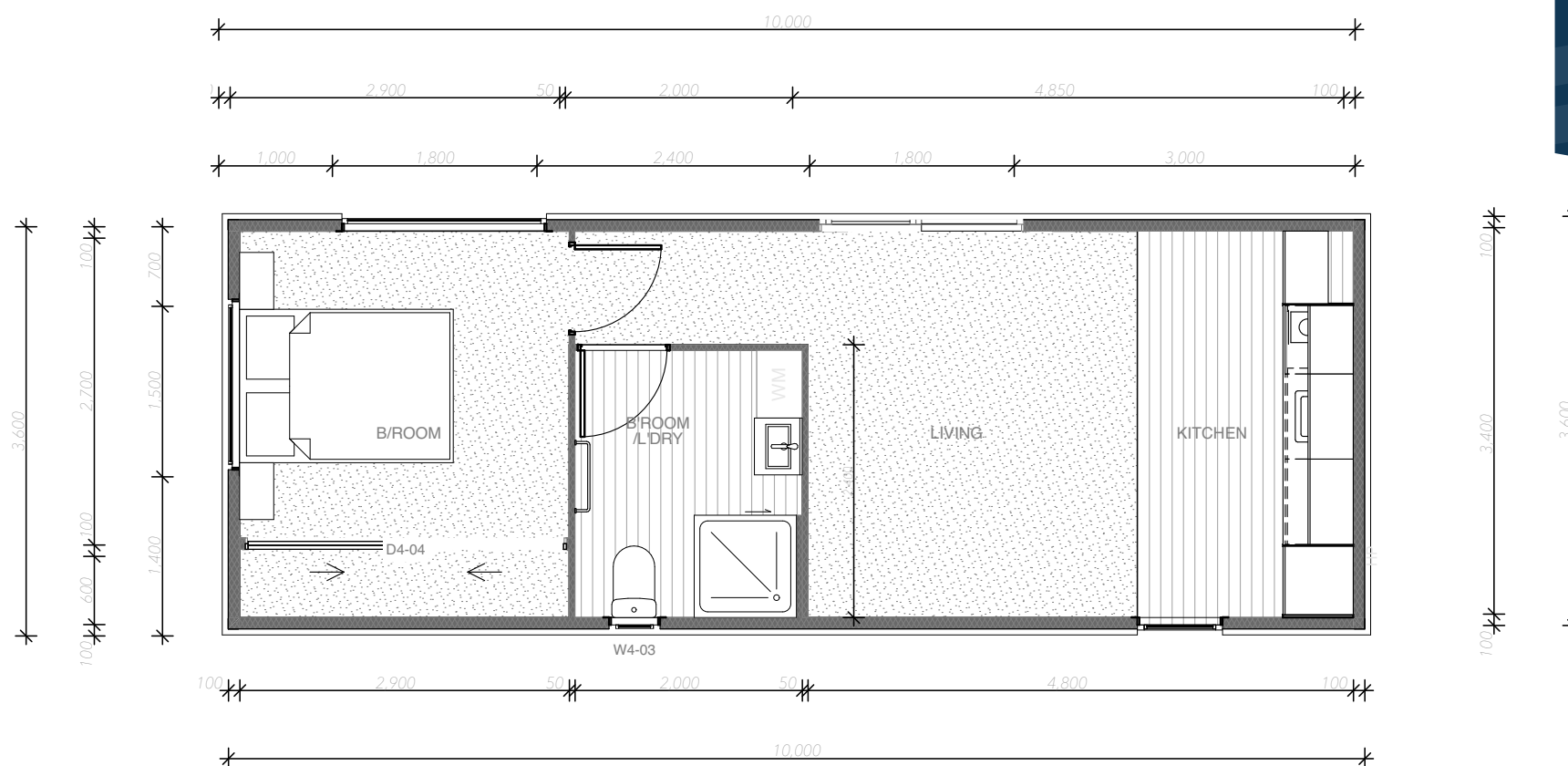
Includes

- Code Of Compliance
- Electrical, Plumbing & Gas Certificates
- 32 Amp Power Socket
- 10x Double Powerpoints
- 7x Internal Led Down Lights
- 2x External Led Lights
- Fully Insulated
- 900 X 900mm Shower
- Gravity-Fed Plumbing
- Bathroom Vanity & Extractor Fan
- Towel Rail & Toilet Roll Holder
- Gas Califont For Hot Water
- Thermal Double Glazing
- 4kw Heatpump
- Smoke Detectors
- 5x Windows
- 1x Ranch Sliders
- Kitchen
- Bathroom
- Oven
- 2 Burner Hob
- In-Built Range Hood
- Large Ceiling to Floor Wardrobe
- Carpet / Vinyl
- Free Design Consultation

Additional Extras

- Composite Timber Cladding
- Trellis
- Wheels/ Drawbar / Stabilisers
- Interior Wallpaper
- Blinds or Curtains
- Engineered Stone Bench Top
- Gas Hob
- Appliances
- Ventilation System
- Heated Towel Rails
- Shower Dome
- Led Mirror

PRICED FROM
\$139,990
+ delivery



HUGO V2



10x 3.6m² | 36m²



1 Bedroom



Bathroom



Kitchen



Wheels Available



PREMIUM PORTABLE HOMES

Includes

- Code of Compliance
- Electrical, Plumbing & Gas Certificates
- 32 Amp Power Socket
- 10x Double Power Points
- 7x Internal LED Down Lights
- 2x External LED Lights
- Fully Insulated
- 900 x 900mm Shower
- Gravity-fed Plumbing
- Bathroom Vvanity & Extractor Fan
- Towel Rail & Toilet Roll Holder
- Gas Califont for Hot Water
- Thermal Double Glazing
- 4kw Heatpump
- Smoke Detectors
- 4x Windows
- 1x Ranch Sliders
- Kitchen
- Bathroom
- Oven
- 2 Burner Hob
- In-built Range Hood
- Large Ceiling to Floor Wardrobe
- Carpet / Vinyl
- Free Design Consultation

Additional Extras

- Composite Timber Cladding
- Trellis
- Wheels/ Drawbar /Stabilisers
- Interior Wallpaper
- Blinds or Curtains
- Kitchen Island & Feature Light
- Engineered Stone Bench Top
- Gas Hob
- Appliances
- Ventilation System
- Heated Towel Rails
- Shower Dome
- LED Mirror