



PRICED FROM  
**\$229,990**  
+ delivery



## THE ELMWOOD V1

12.5 x 3.6m<sup>2</sup> + 6 x 3.6 | 66.6m<sup>2</sup>

3 Bedroom

Bathroom

Kitchen

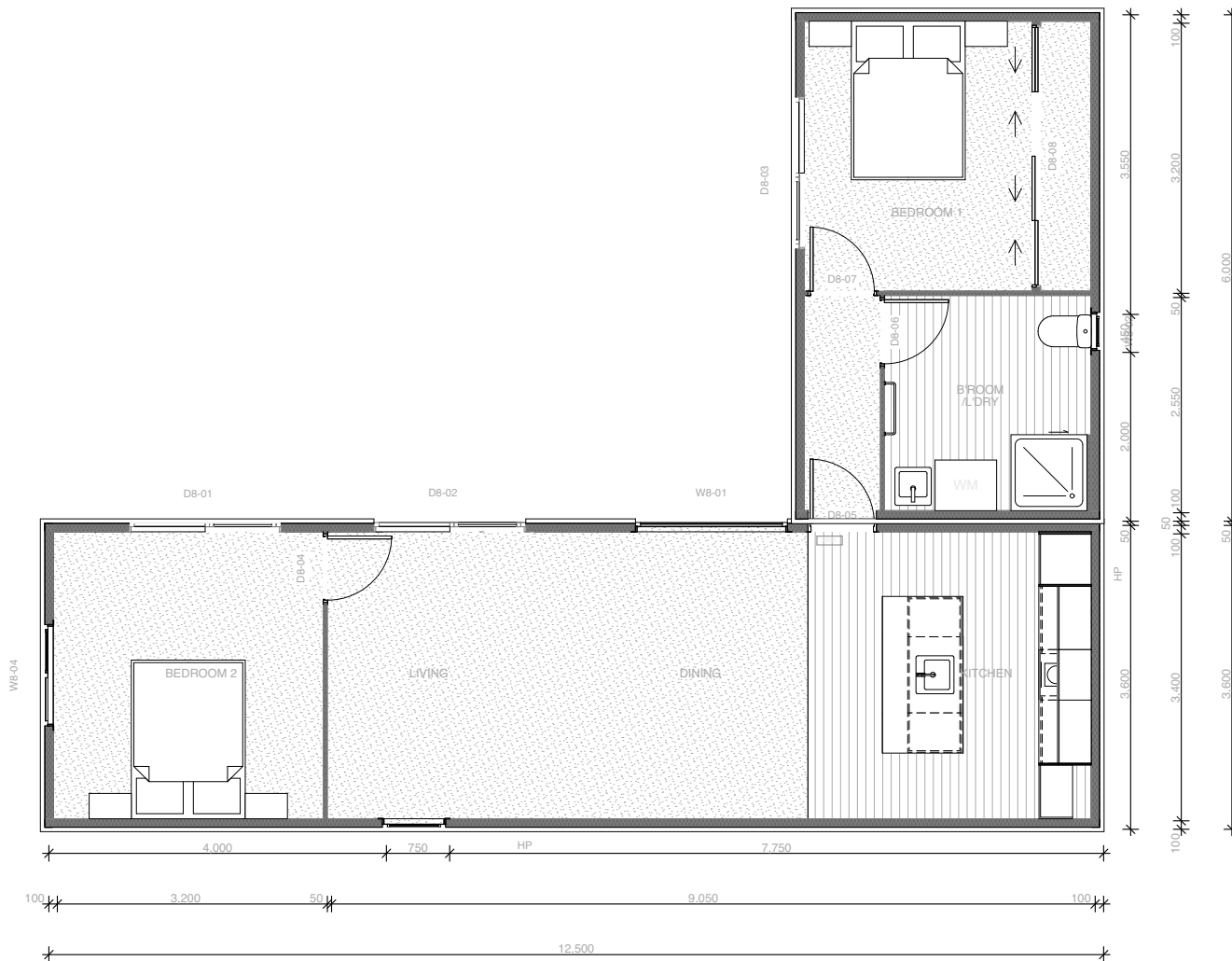
PREMIUM PORTABLE HOMES

### Includes

- Code of Compliance
- Electrical, Plumbing & Gas Certificates
- 32 Amp Power Socket
- 15x Double Power Points
- 12x Internal LED Down Lights
- 5x External LED Lights
- Fully Insulated
- 900 x 900mm Shower
- Gravity-fed Plumbing
- Bathroom Vanity & Extractor Fan
- Towel Rail & Toilet Roll Holder
- Gas Calfont for Hot Water
- Thermal Double Glazing
- 4kw Heatpump
- Smoke Detectors
- 6x Windows
- 3x Ranch Sliders
- Kitchen Includes Island & Pendant
- Bathroom
- Oven
- 2 Burner Hob
- In-built Range Hood
- Large Floor to Ceiling wardrobe
- 600mm Wardrobe
- Carpet / Vinyl

### Additional Extras

- Composite Timber Cladding
- Trellis
- Skylights
- Wheels/ Drawbar /Stabilisers
- Interior Wallpaper
- Blinds or Curtains
- Engineered Stone Bench Top
- Gas Hob
- Appliances
- Ventilation System
- Heated Towel Rails
- Shower Dome
- LED Mirror



PRICED FROM  
**\$229,990**  
+ delivery



## THE ELMWOOD V2

**12.5 x 3.6m<sup>2</sup> + 6 x 3.6 | 66.6m<sup>2</sup>**

**2 Bedroom**

**Bathroom**

**Kitchen**



PREMIUM PORTABLE HOMES

### Includes

- Code of Compliance
- Electrical, Plumbing & Gas Certificates
- 32 Amp Power Socket
- 14x Double Power Points
- 12x Internal LED down Lights
- 6x External LED Lights
- Fully Insulated
- 900 x 900mm Shower
- Gravity-fed Plumbing
- Bathroom Vanity & Extractor Fan
- Towel Rail & Toilet Roll Holder
- Gas Califont for Hot Water
- Thermal Double Glazing
- 4kw Heatpump
- Smoke Detectors
- 5x Windows
- 3x Ranch Sliders
- Kitchen includes Island & Pendant
- Bathroom
- Oven
- 2 Burner Hob
- In-built Range Hood
- Large Floor to Ceiling Wardrobe
- 600mm Wardrobe
- Carpet / Vinyl

### Additional Extras

- Composite Timber Cladding
- Trellis
- Skylights
- Wheels/ Drawbar /Stabilisers
- Interior Wallpaper
- Blinds or Curtains
- Engineered Stone Bench Top
- Gas Hob
- Appliances
- Ventilation System
- Heated Towel Rails
- Shower Dome
- LED Mirror